



## ***Pedway Plaza Concept Designs***

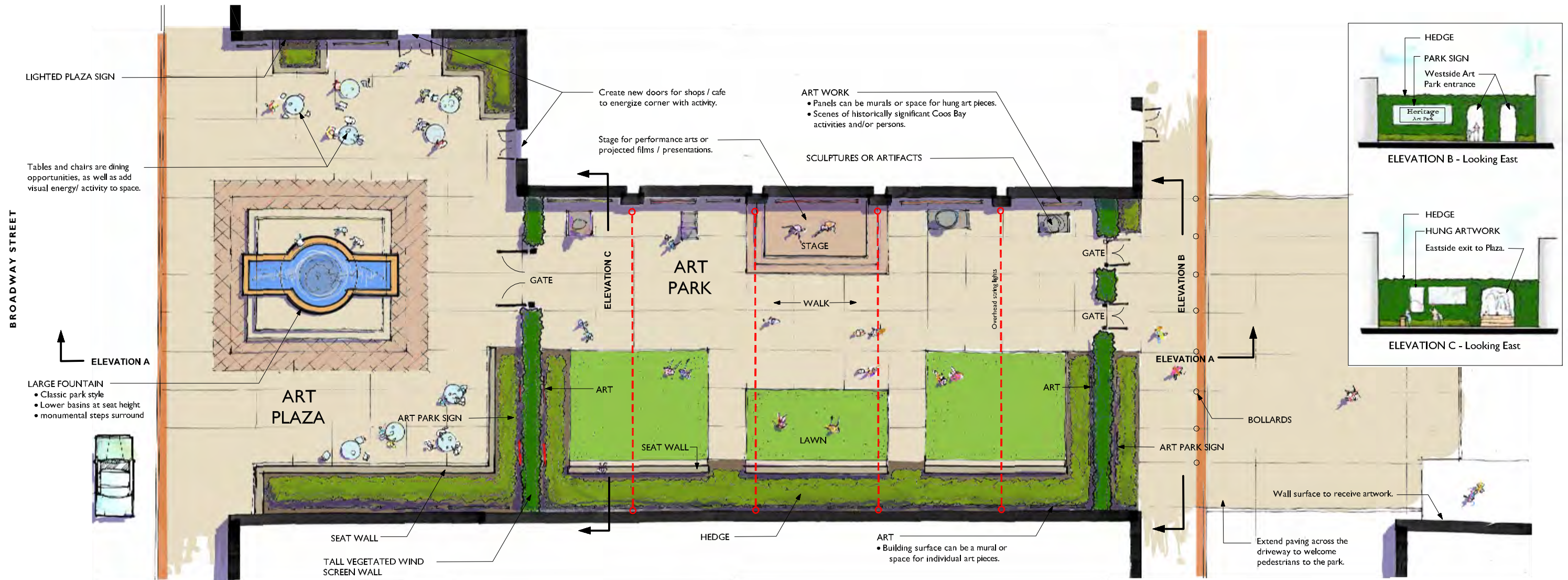
The City of Coos Bay contracted with Cameron McCarthy Gilbert and Scheibe to develop concept designs for the Pedway Plaza located in the downtown area. Three designs have been prepared. An open house for citizen review of the concept designs and time with the architect will be held on March 18, 2010 at 5:30 p.m. in the Council Chambers, City Hall, 500 Central Avenue. All interested citizens are encouraged to attend the meeting.

***Concept A - Heritage Art Park and Plaza***

***Concept B - Tide Park***

***Concept C - Breeze Art park***

Each of the above listed concepts can be viewed on the next pages



**Concept Summary - Heritage Art Park & Plaza**

This scheme complements the classic architecture and layout of Coos Bay's downtown structures. It transforms the open space into two distinct and formal outdoor rooms. It utilizes traditional garden elements such as pruned hedges and manicured lawns - in classic shapes and forms. Tall vegetated walls enclose the Art Park to provide significant wind diffusion and create a more intimate space for viewing art and hosting events or performances/presentations. The Art Park is gated for potential closure in evening hours and controlled access during pay admission or rental events (revenue generating). A large vintage-style fountain anchors the east side, providing an attractive feature in the most visible part of the site and automobile noise mitigation for Broadway Street. The art (murals, hung pieces, and sculptures) are proposed to feature historically significant Coos Bay places, events, commerce and/or persons, and have educational/interpretive value.

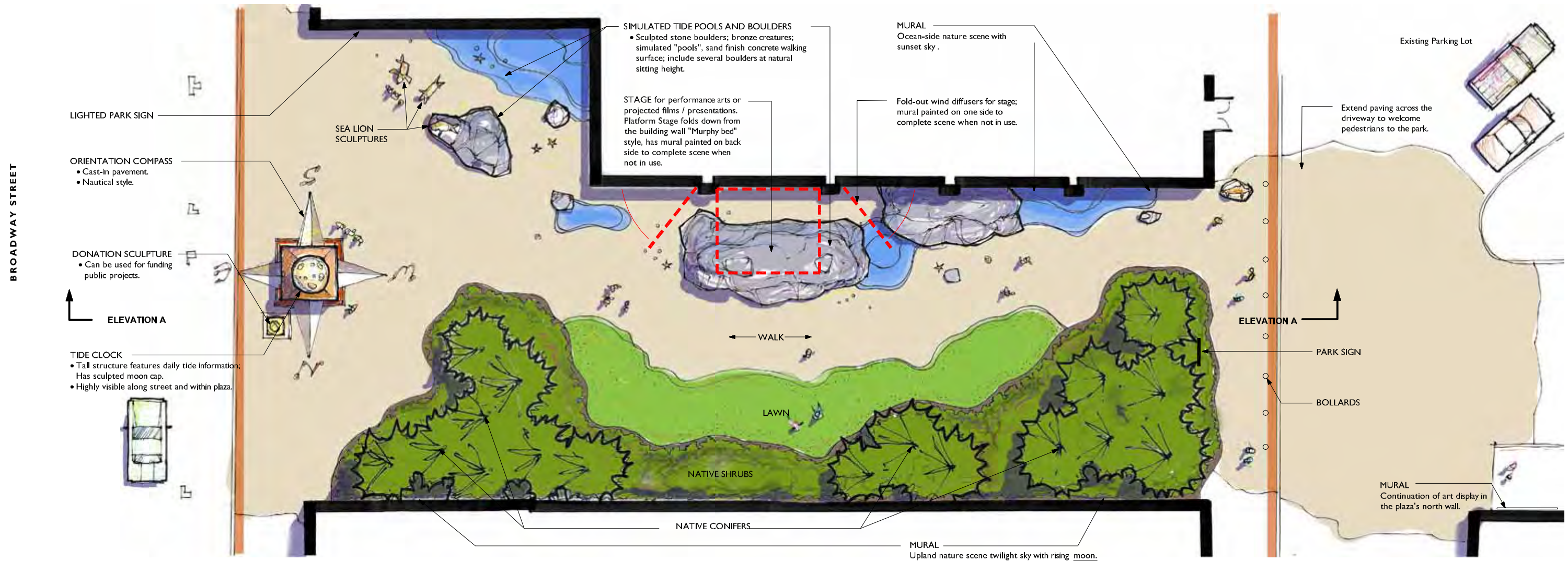


**ELEVATION A - Looking South**

\* Some historic images shown are courtesy of the Oregon State Library.

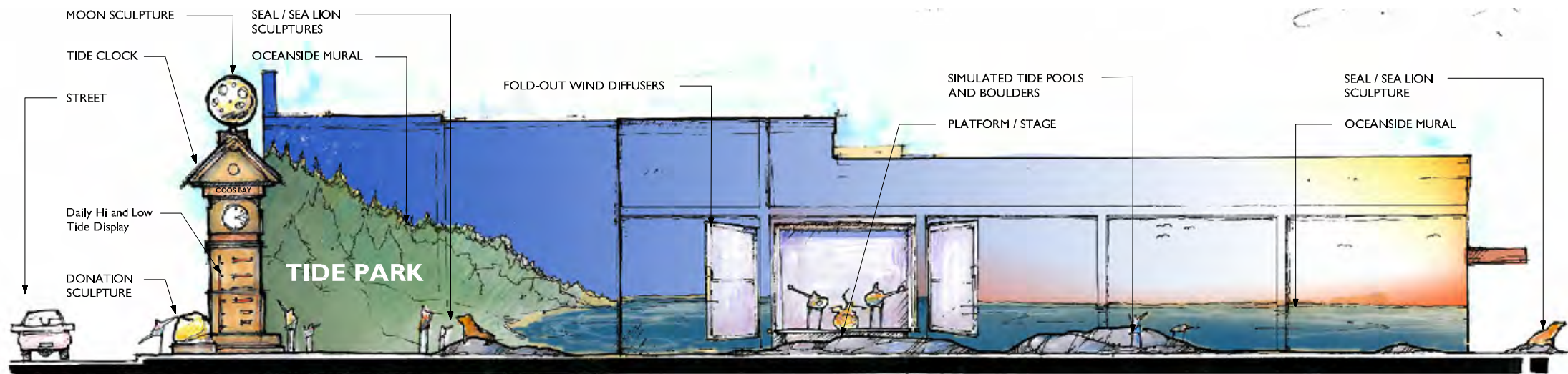
Coos Bay Downtown  
Open Space Enhancements

**Concept A - Heritage Art Park & Plaza**



**Concept Summary - Tide Park**

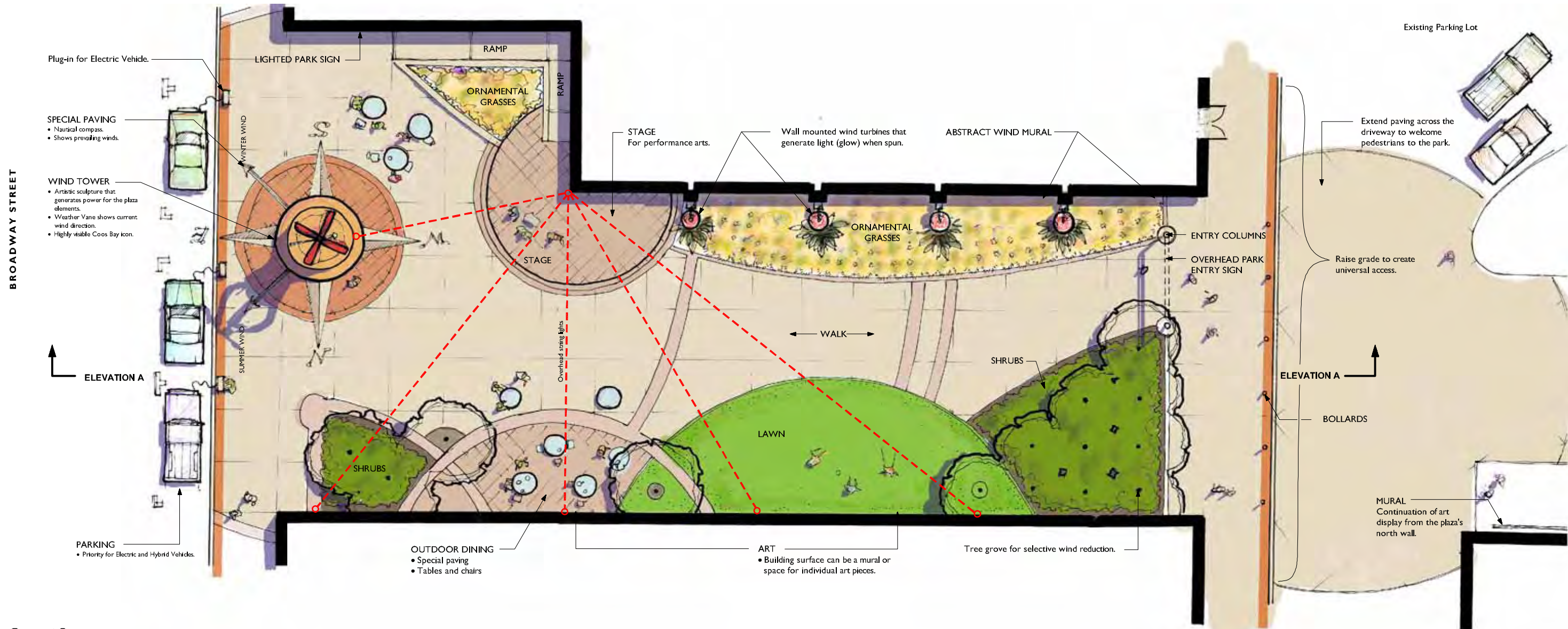
This scheme is inspired by the perpetual cycle of tides that are a natural phenomenon of both the coast and the bay. A tide clock is proposed as the monumental anchor of the park and has the potential to become an icon unique to Coos Bay. It will feature daily tide information identifying the times and height of the day's high and low marks. A sculpted moon is proposed for a cap, to recognize and celebrate the lunar influence on tidal movements. The open space is intended to provide park visitors a simulated coastal nature experience. The south building wall is a photo-realistic view of the beach and ocean-side. The north building wall is a photo-realistic view of the wooded uplands. The surfaces within the court transition from simulated beach on the South side (represented at low tide with tide pool creatures) to native plants on the north side. The shapes and forms of the elements are informal and organic. Like the coast, places of refuge from the wind are available in proximity to vegetation yet other areas are exposed. This concept is intended to bring a coastal experience to the city that is located several miles inland, with significant educational/interpretive opportunities.



ELEVATION A - Looking South

Coos Bay Downtown  
 Open Space Enhancements

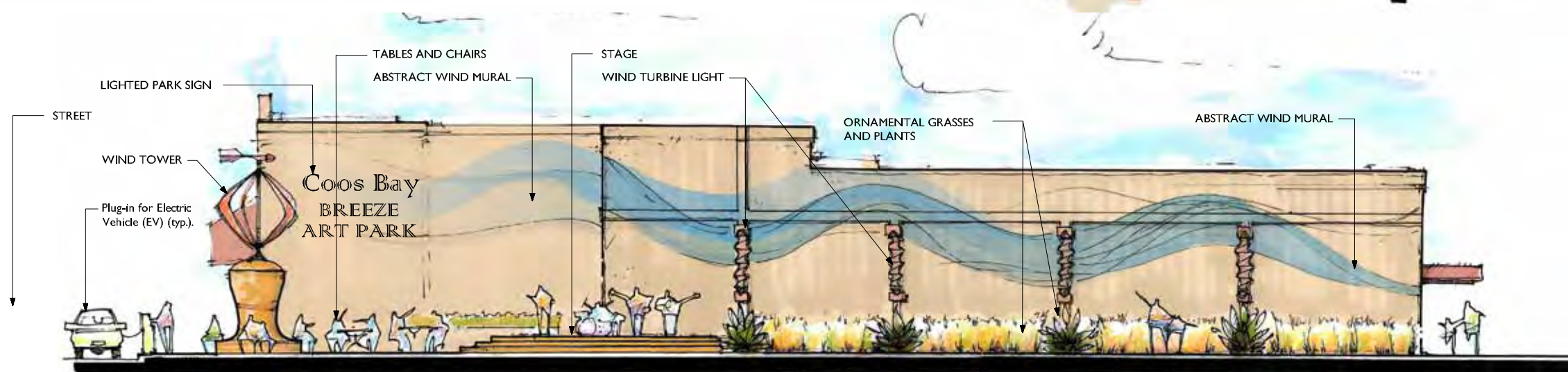
**Concept B - Tide Park**



**Concept Summary -**

This scheme celebrates and harnesses the wind, an aspect of the existing space that is currently considered a major liability. An artist-created (or influenced) wind sculpture is proposed as the monumental anchor of the park and has the potential to become an icon unique to Coos Bay. The current wind direction and speed, as well as prevailing seasonal winds, will be displayed through this feature.

Generating and supplying power to park elements, by incorporating a turbine, is also a possibility. One unique feature is priority parking and an electric vehicle "filling station". Wind powered lights are also proposed. The built elements of the open space will feature shapes and forms that are free-flowing and curvilinear in nature. Murals are proposed to be modern artistic impressions inspired by this natural force. A mass planting of native grasses will add a dynamic visual as the variable breezes flow through them. There are numerous educational and interpretive opportunities for both the natural aspects of wind and ongoing human efforts to transform it into an energy source.



ELEVATION A - Looking South

Coos Bay Downtown  
Open Space Enhancements

**Concept C- Breeze Art Park**