



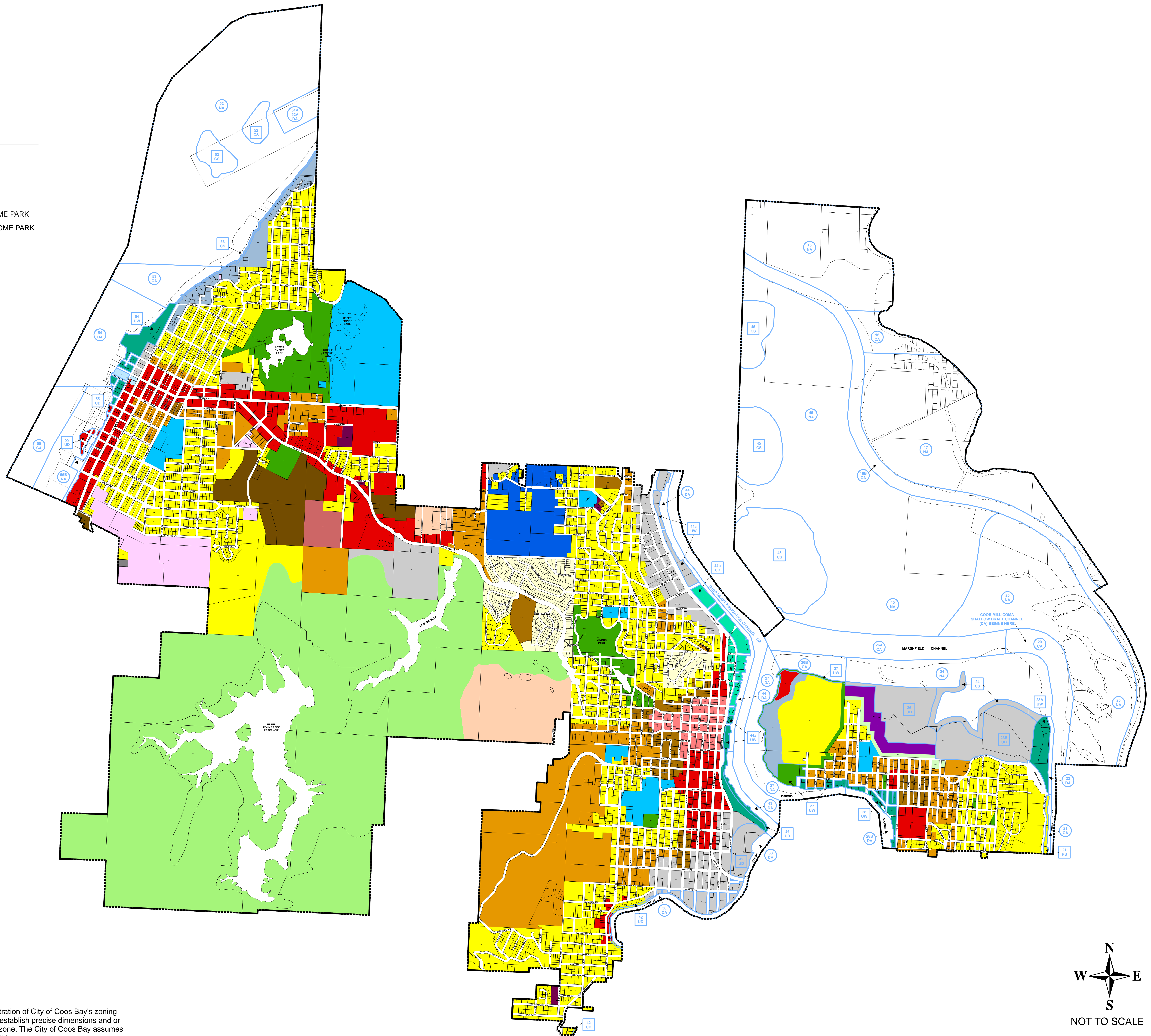
CITY OF COOS BAY ZONING MAP

LEGEND

- R-1 SINGLE FAMILY RESIDENTIAL
- R-2 SINGLE FAMILY / DUPLEX RESIDENTIAL
- R-3 MULTIPLE RESIDENTIAL
- R-4P RESIDENTIAL PROFESSIONAL
- R-5 RESIDENTIAL CERTIFIED FACTORY BUILT HOME PARK
- R-6 SINGLE FAMILY / DUPLEX / FACTORY BUILT HOME PARK
- R-W RESTRICTED WATERFRONT RESIDENTIAL
- MP MEDICAL PARK
- C-1 CENTRAL COMMERCIAL
- C-2 GENERAL COMMERCIAL
- HP HOLLERING PLACE
- I-C INDUSTRIAL / COMMERCIAL
- G-I GENERAL INDUSTRIAL
- W-I WATERFRONT INDUSTRIAL
- WH WATERFRONT HERITAGE
- ITL INDIAN TRUST LAND
- RFP RESERVED FOR FUTURE PLANNING
- QP-1 PARK / CEMETARY
- QP-2 WATERSHED
- QP-3 PUBLIC EDUCATION FACILITIES
- QP-5 BUFFER
- QR-3 AREA QUALIFIED FOR R-3 USE
- QR-4P AREA QUALIFIED FOR R-4P USE
- CITY LIMITS

COOS BAY ESTUARY MANAGEMENT PLAN

- SHORELAND OR UPLAND UNIT DESIGNATION
- AQUATIC UNIT DESIGNATION



Disclaimer:

This map is a geographic illustration of City of Coos Bay's zoning districts and is not intended to establish precise dimensions and or surveyed boundaries of each zone. The City of Coos Bay assumes no liability for the accuracy of this map.

REVISED 7/29/10

